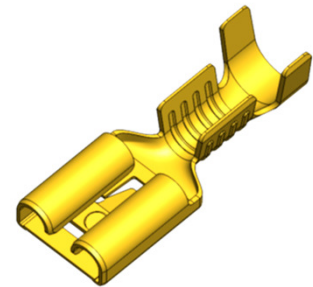


TAB SIZE	6,3 x 0,80
WIRE SIZE	1,00 - 2,50 mm ²
MATERIAL	CuZn
PLATING	-
MAXIMAL TEMPERATURE	110 °C



TEST RESULTS

INSERTION / WITHDRAWAL FORCE

	1. INSERTION	1. WITHDRAWAL	6. WITHDRAWAL
TS EN 61210	80 N max.	-	18 N min.
HATKO	80 N max.	-	18 N min.
Typical Values	26 N	30 N	25 N

CRIMP PULL-OUT FORCE

	1. PULL OUT FORCE		
	1,00 mm ²	1,50 mm ²	2,50 mm ²
TS EN 61210	108 N min	150 N min	230 N min
HATKO	108 N min	150 N min	230 N min
Typical Values	184 N	216 N	271 N

CRIMP MEASUREMENTS

	HEIGHT		WIDTH	
	WIRE	INSULATOR	WIRE	INSULATOR
1,00 mm ²	1,67 ±0,04	3,26 ±0,05	3,05 ±0,05	4,05 ±0,05
1,50 mm ²	1,76 ±0,04	3,50 ±0,05	3,05 ±0,05	4,05 ±0,05
2,50 mm ²	1,93 ±0,04	3,62 ±0,05	3,08 ±0,05	4,10 ±0,05

	CURRENT CARRYING CAPACITY Max. A	AMBIENT TEMPERATURE °C
1,00 mm ²	18	20
1,50 mm ²	22	20
2,50 mm ²	26	25

PREP.: TURAN KELEŞ

CON.: HUSEYİN DOĞAN