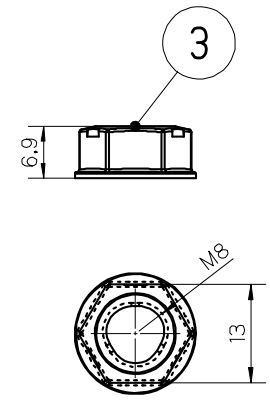
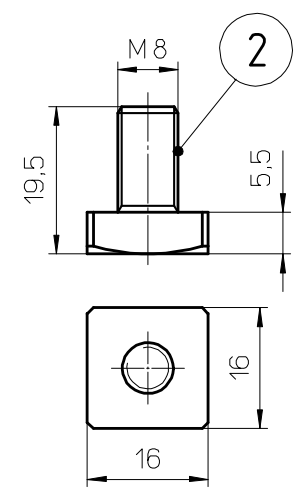
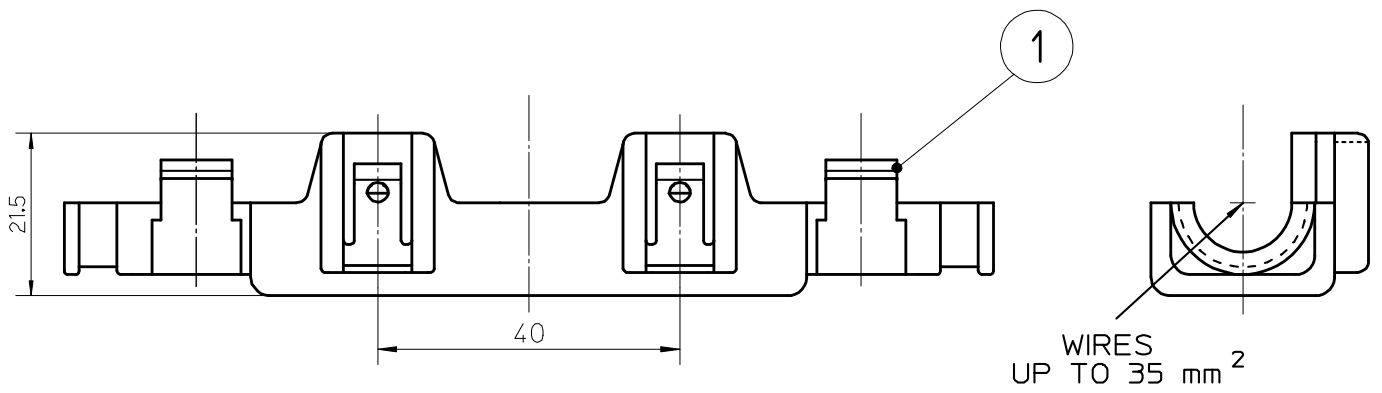
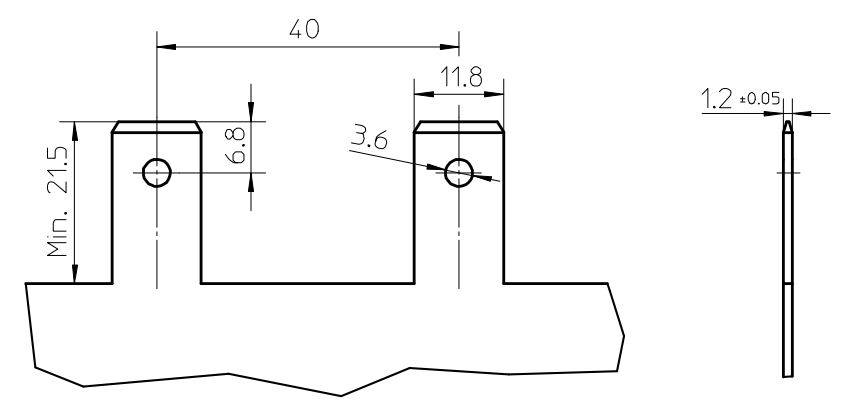


All proprietary rights reserved by MTA S.p.A. - This drawing shall not be reproduced, or in any way utilized, for the manufacture of the component or unit herein illustrated and must not be released to other parties, without written consent. Any infringement will be legally pursued.

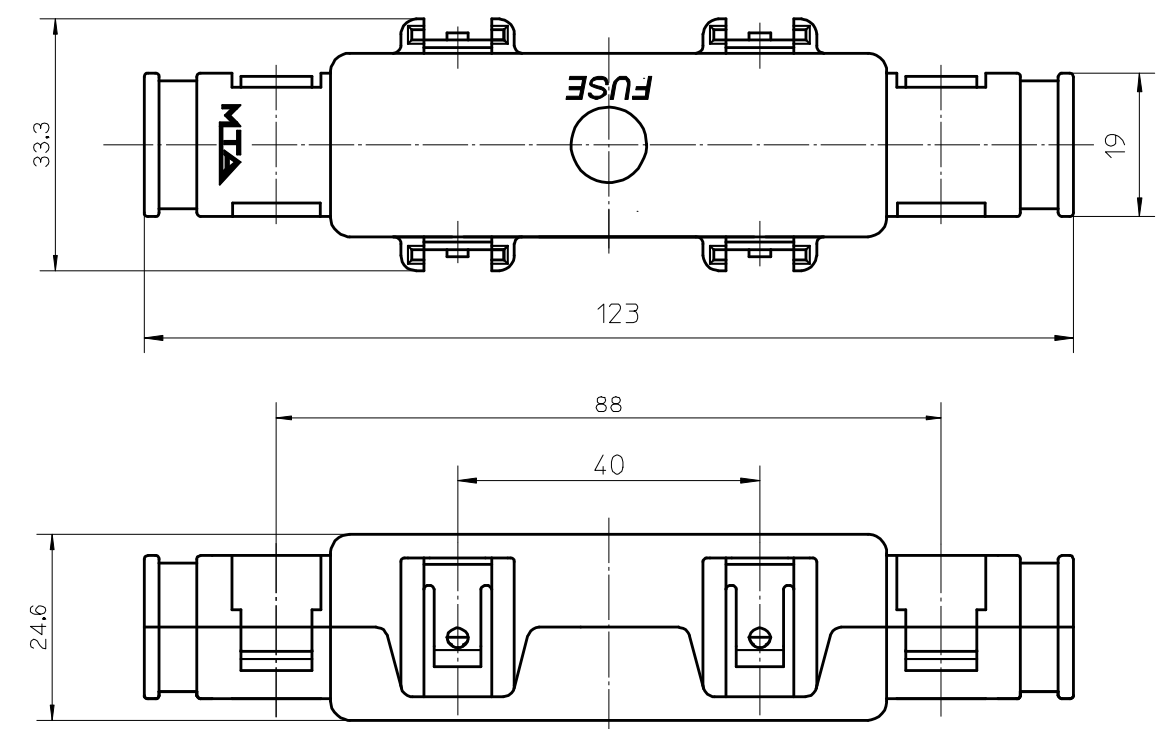


FIXING TEMPLATE EXEMPLE



OPERATING FEATURES		
FEATURE	UNIT	VALUE
V max	V	32
T. min - T. max	°C	-40 / +130
IP	IEC 529	20
Tightening Torque	Nm±20%	11

ASSEMBLY VIEW



ONLY FOR REFERENCE

Pos.	Q.ty	DENOMINATION	MATERIAL
3	2	ALL METAL SELF-LOCKING FLANGED NUT M8 X 6.9	Steel
2	2	SCREW M8 X 14	Steel
1	2	HALF - SHELL	PA66-GF30 HB - BLACK COLOR

MTA		MTA P/N	0300380/10	Denom. MEGAVAL HOLDER 1 WAY	
		Draw No.	B0-001.015A	Used for MEGAVAL FUSES	
Rel. Level		APPROVED	Draw for	CLIENT	Relevant Standard FUSE HOLDERS ONE WAY
	Date	Name	Scale	Weight(g)	Lin.Tol.±
Draft.	29/05/1997	I. MASSARI	1:1		0.5
Chk	29/05/1997	I. MASSARI			2
PQApp	09/01/2008	R.GONZALEZ	A3	Dimensions in (mm)	Sheet 1/1
App.	09/01/2008	M.CORBANI			
				Coating	SEE TABLE
				Color	SEE TABLE

7	TIGHTENING TORQUE OPTIMIZED (ALIGNED TO ALL MTA FUSE HOLDER)		
No.	Reason for Revision	Date	08/01/2008
		Name	RDALMA