

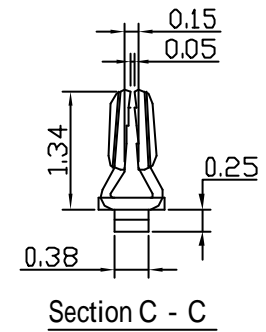
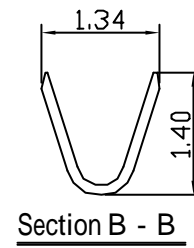
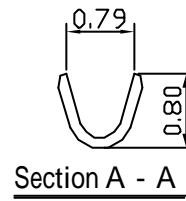
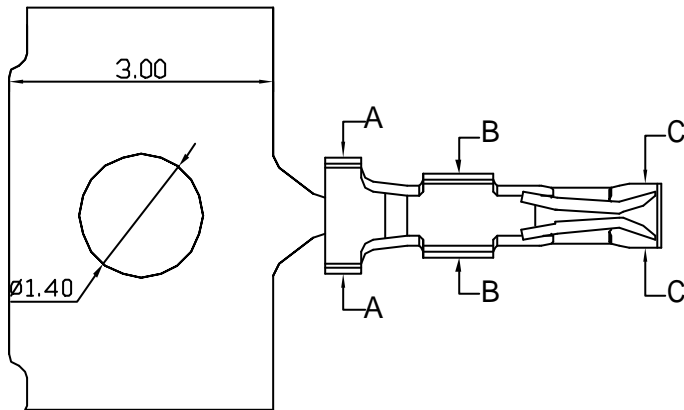
**SPECIFICATIONS**

**Electrical**

Current Rating: 1A AC, DC  
 Voltage Rating: 50V AC/ max.  
 Operating Temp.: -25 °C ~ +85 °C  
 Insulation Resistance: 100M / min.  
 Dielectric Withstanding Voltage: 500V AC/ min.  
 Contact Resistance: 20M / max.

**Material**

Terminal material: Phosphor Bronze/ Tin-plated  
 Wire Range: 28 to 32AWG



**玄茂科技股份有限公司**  
**HSUAN MAO TECHNOLOGY CO., LTD.**

UNIT

SCALE

PART NAME

MM

2:1

SH1.0mm TERMINAL

APPD.

CKD.

TOLERANCE

PART NO.

REV.

制表日: 2003/08/26

DRAWING.

APPROVED

Jane

± 0.3

T9010-TPP00000

A