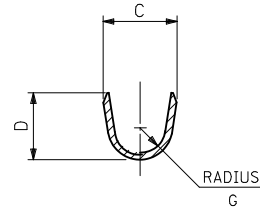
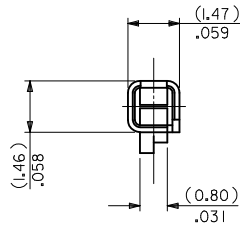
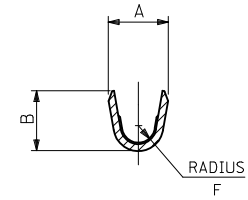


SECTION X-X



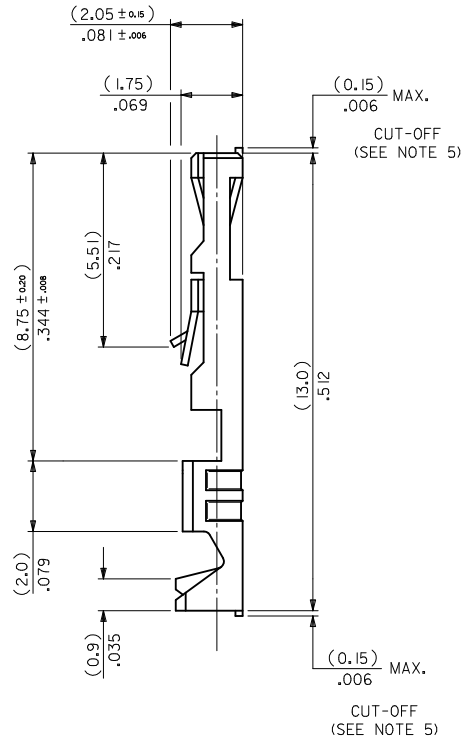
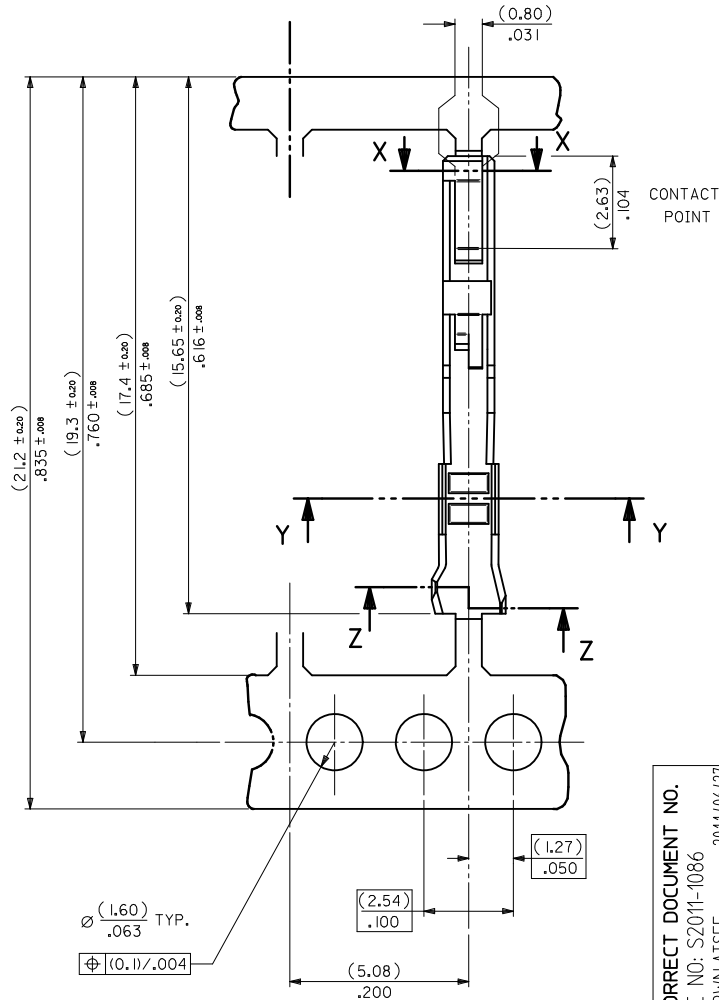
SECTION Z-Z

INSULATION BARREL



SECTION Y-Y

WIRE BARREL



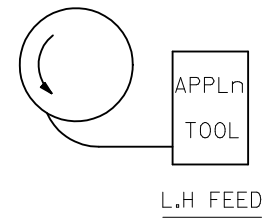
NOTES:

1. MATERIAL - PHOSPHOR BRONZE CDA 521 THICKNESS: (0.200) ± .008 TENSILE STRENGTH- 655-760 N/mm² PLATING - SEE SHEET 2
2. FOR DIMENSIONS A, B, C, D, F & G SEE SHEET 2
3. FOR WIRE SIZE & INSULATION DIA SEE SHEET 2
4. THIS TERMINAL TO MATE WITH (0.635) ± .025 SQUARE PIN
5. MAX BURR AFTER CUT-OFF (0.025) ± .001

| | | | | | | | |
|---|---|---------------------------------------|-------|----------------------------|---|---|------------------------|
| CORRECT DOCUMENT NO. EC NO: S2011-1086 DRWNATSEE 2011/06/27 CHKD:SKANG 2011/07/04 APPR:MLONG 2011/07/04 | QUALITY SYMBOLS FA=0 FC=0 FP=0 | GENERAL TOLERANCES (UNLESS SPECIFIED) | | DIMENSION STYLE MM ONLY | SCALE NTS | DESIGN UNITS METRIC | THIRD ANGLE PROJECTION |
| | | mm | INCH | DRAWN BY NPC | DATE 1987/08/27 | TITLE C-GRID III FEMALE CRIMP TERMINAL | |
| L1 | DESCRIPTION | 4 PLACES | ± --- | ± --- | CHECKED BY D.MORIARTY | DATE 2005/08/26 | MOLEX INCORPORATED |
| | | 3 PLACES | ± --- | ± .004 | APPROVED BY MLONG | DATE 2011/07/04 | |
| | | 2 PLACES | ± 0.1 | ± .008 | MATERIAL NO. SEE TABLE | DOCUMENT NO. SD-90119 | SHEET NO. 1 OF 2 |
| | | 1 PLACE | ± 0.2 | ± --- | THIS DRAWING CONTAINS INFORMATION THAT IS PROPRIETARY TO MOLEX INCORPORATED AND SHOULD NOT BE USED WITHOUT WRITTEN PERMISSION | | |
| DRAFT WHERE APPLICABLE MUST REMAIN WITHIN DIMENSIONS | | ANGULAR ± .5 ° | | | | | |

| PART No | PLATING | REELING | WIRE SIZE (AWG) | INSULATION RANGE | CRIMP DIMENSIONS | | | | | |
|------------|---------|-------------------------|-----------------|--------------------------|-----------------------|-----------------------|-----------------------|-----------------------|-----------------------|-----------------------|
| | | | | | WIRE BARREL | | | INSULATION BARREL | | |
| | | | | | A ±(0.15) ±.006 | B ±(0.15) ±.006 | F ±(0.15) ±.006 | C ±(0.15) ±.006 | D ±(0.15) ±.006 | G ±(0.15) ±.006 |
| 90119-0109 | A | L.H FEED | 22,24 | (1.02-1.47) .040-.058 | (1.70) | (1.70) | (0.51) | (2.10) | (1.90) | (0.70) |
| -0110 | E | | | | .067 | .067 | 0.20 | .083 | .075 | 0.27 |
| -0111 | F | | | | | | | | | |
| -0112 | D | | | | | | | | | |
| -0120 | A | | 26,28 | (0.76-1.22) .030-.048 | (1.37) | (1.37) | (0.28) | (2.00) | (1.70) | (0.60) |
| -0121 | E | | | | .054 | .054 | 0.11 | .079 | .067 | 0.24 |
| -0122 | F | | | | | | | | | |
| -0123 | D | | | | | | | | | |
| -2109 | A | LOOSE PIECE PARTS | 22,24 | (1.02-1.47) .040-.058 | (1.70) | (1.70) | (0.51) | (2.10) | (1.90) | (0.70) |
| -2110 | E | | | | .067 | .067 | 0.20 | .083 | .075 | 0.27 |
| -2111 | F | | | | | | | | | |
| -2112 | D | | | | | | | | | |
| -2120 | A | | 26,28 | (0.76-1.22) .030-.048 | (1.37) | (1.37) | (0.28) | (2.00) | (1.70) | (0.60) |
| -2121 | E | | | | .054 | .054 | 0.11 | .079 | .067 | 0.24 |
| -2122 | F | | | | | | | | | |
| 90119-2123 | D | | | | | | | | | |

| TYPE | PLATING |
|------|--|
| A | PRE-PLATED HOT DIP TIN (1.0 to 2.5 um)/.00004 TO .0001 |
| E | (1.27 TO 1.78um)/.00005 TO .00007 NICKEL OVERALL. (0.38 TO 0.64um)/.000015 TO .000025 GOLD ON CONTACT AREA. (3.0 TO 5.0 um)/.00012 TO .0002 TIN ON TERMINATION AREA. |
| F | (1.27 TO 1.78um)/.00005 TO .00007 NICKEL OVERALL. (0.76 TO 01.0 um)/.00003 TO .00004 GOLD ON CONTACT AREA. (3.0 TO 5.0 um)/.00012 TO .0002 TIN ON TERMINATION AREA. |
| D | 1.25µm MIN NICKEL OVERALL. 0.05µm TO 0.10µm GOLD FLASH ON CONTACT AREA 2.50µm MIN TIN ON CRIMP AREA |



| | | | | | | | | | |
|---|---|---|---|--------------------------------------|--|--|------------------------|--|--|
| CORRECT DOCUMENT NO. EC NO: S2011-1086 DRWN:ATSEE 2011/06/27 CHKD:SKANG 2011/07/04 APPR:MLONG 2011/07/04 REV L1 | QUALITY SYMBOLS F=0 F=0 F=0 | GENERAL TOLERANCES (UNLESS SPECIFIED) | | DIMENSION STYLE MM ONLY | SCALE NTS | DESIGN UNITS METRIC | THIRD ANGLE PROJECTION | | |
| | | 4 PLACES ± --- ± --- 3 PLACES ± --- ± .004 2 PLACES ± 0.1 ± .008 1 PLACE ± 0.2 ± --- | mm INCH ± --- ± --- ± 0.1 ± .008 ± 0.2 ± --- | DRAWN BY NPC DATE 1987/08/27 | CHECKED BY D.MORIARTY DATE 2005/08/26 | TITLE C-GRID III FEMALE CRIMP TERMINAL | | | |
| | | ANGULAR ± .5 ° | | APPROVED BY MLONG DATE 2011/07/04 | MOLEX MOLEX INCORPORATED | | | | |
| | | DRAFT WHERE APPLICABLE MUST REMAIN WITHIN DIMENSIONS | | MATERIAL NO. SEE TABLE | DOCUMENT NO. SD-90119 | SHEET NO. 2 OF 2 | | | |